



TCCI

TASMANIAN SURVEY OF BUSINESS EXPECTATIONS

2022 QUARTER 1

The TCCI is pleased to present the results of the Tasmanian Survey of Business Expectations (TSBE) quarter one for 2022.

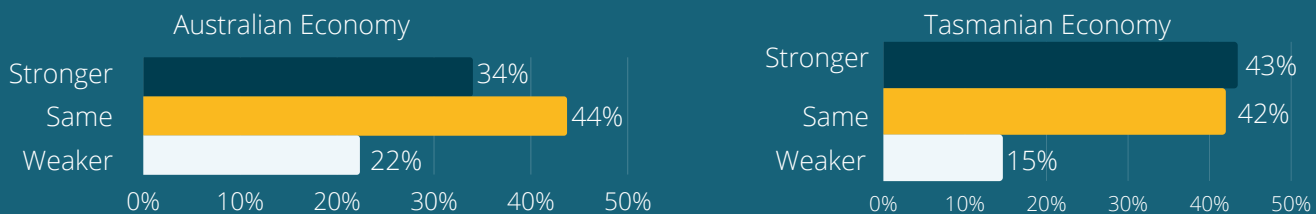
The TSBE is Tasmania's longest running survey of business expectations. The survey is conducted quarterly and captures the general sentiment of business confidence and their expectations for that period.

AUSTRALIAN AND TASMANIAN ECONOMIC PERFORMANCE

In relation to the Australian economy, 34 per cent of respondents expect a stronger performance over the next 12 months, this is a significant increase from 23 per cent in the previous quarter. 44 per cent expect the same performance and 22 per cent expect a weaker performance. Overall business confidence in the future performance of the Australian economy has increased.

Respondents have optimistic expectations for the Tasmanian economy with 43 per cent expecting stronger performance, 42 per cent expecting the same and only 15 per cent expecting weaker performance. Confidence has increased from the previous quarter where 31 per cent of respondents indicated that they expected a weaker performance from the Tasmanian economy over the next 12 months.

PERFORMANCE EXPECTATIONS OF ECONOMIES OVER THE NEXT 12 MONTHS IN COMPARISON TO THE LAST 12 MONTHS



YOUTH AND WORKFORCE

This quarter businesses were asked to respond to some questions about young people. Just over three quarters of respondents did not feel that the education system was adequately preparing young people to enter the workforce.

Most employers (80 percent) rated the attraction and retention of young people as an important part of organisation workforce planning.

The number of comments and responses to these questions indicates that this is a topical issue for employers.

When asked about what core skills and attributes employers are looking for when employing young people, there were some clear themes identified.

THE TASMANIAN SURVEY OF BUSINESS EXPECTATIONS IS SUPPORTED BY THE TASMANIAN GOVERNMENT

TASMANIAN CHAMBER OF COMMERCE AND INDUSTRY

Enabling Business in Tasmania

1300 559 112 www.tcci.com.au

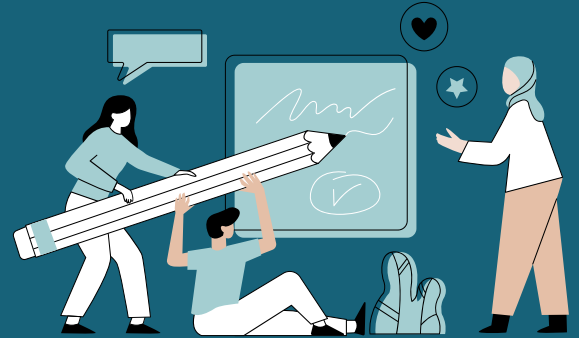


TCCI

TASMANIAN SURVEY OF BUSINESS EXPECTATIONS

SKILLS AND ATTRIBUTES EMPLOYERS ARE LOOKING FOR IN YOUNG PEOPLE:

- Reliable, honest, polite and respectful
- Positive attitude
- Strong work ethic
- Ability to follow instructions and willingness to learn
- Problem solving skills including critical thinking and creativity
- Communication, teamwork and customer service skills
- Competent literacy and numeracy skills including digital literacy



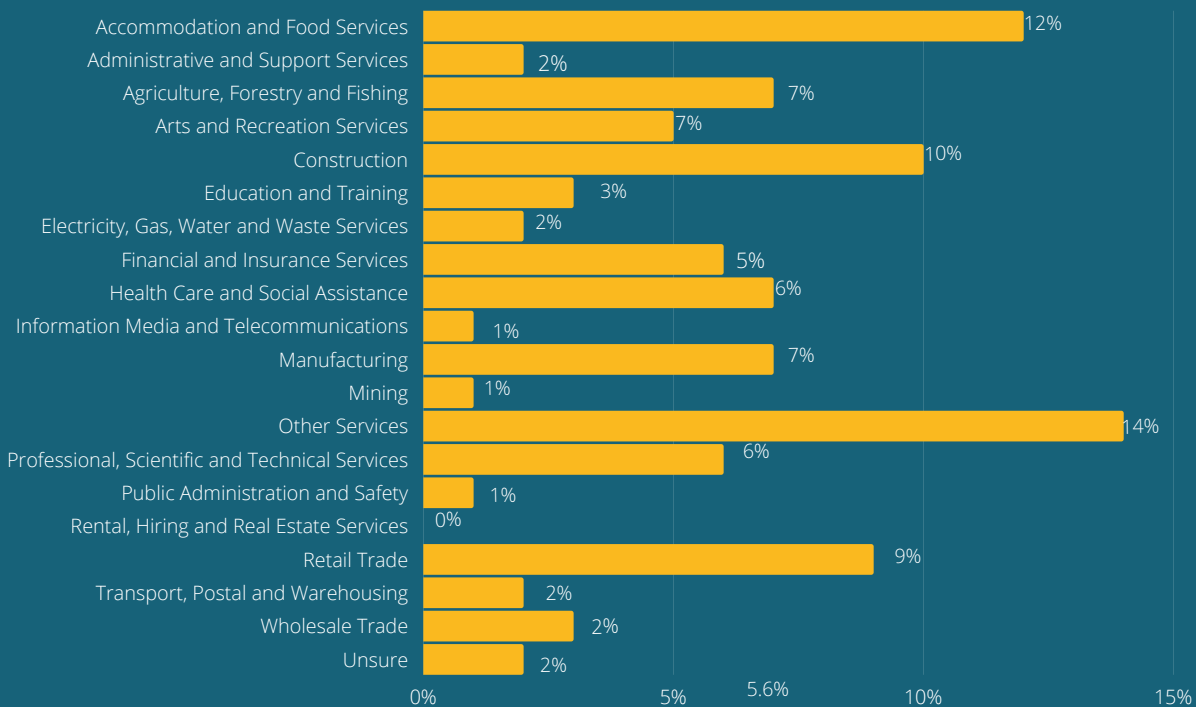
ABOUT THE RESPONDENTS

All regions of the state were well represented based on business density by region, with 58 per cent of respondent's businesses based in the south, 24 per cent in the north and 18 per cent in the north-west. All industry sectors were represented.

87 per cent of survey respondents own or operate a business in Tasmania with the remaining 13 per cent representing industry bodies.

51 per cent of respondents employ between 1 and 19 employees, 20 per cent employ between 20 and 99, 14 per cent employ over 100 and 15 per cent indicated that they did not have any employees.

RESPONDENTS BY INDUSTRY SECTOR



THE TASMANIAN SURVEY OF BUSINESS EXPECTATIONS IS SUPPORTED BY THE TASMANIAN GOVERNMENT

TASMANIAN CHAMBER OF COMMERCE AND INDUSTRY

Enabling Business in Tasmania

1300 559 112 www.tcci.com.au